

→ **STOPAQ® 2100**

Sealing compound

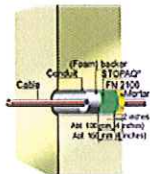
Features

- Adheres on wet and dry surfaces
- Fast and easy to apply
- Water and gas impermeable
- Long term protection, does not age



STOPAQ B.V.
Gasselterstraat 20
9503 JB Stadskanaal
P.O. Box 285
9500 AG Stadskanaal
The Netherlands
T +31 (0) 599 696170
F +31 (0) 599 696177
info@stopaq.com
www.stopaq.com

Wall inlets below ground water level
Sealing of running water leaks
Wall penetrations inside buildings
Multi pipe & cable inlets



- 1** Built-up STOPAQ[®] 2100 Waterplug system:
 Barrier 1: Suitable Barrier Material
 Swelling sealant: STOPAQ[®] 2100 (10cm)
 Barrier 2: STOPAQ[®] Mortar



- 4** Wrap the cables with suitable barrier material, like foamtape. Make sure that 15cm is open for the sealing.



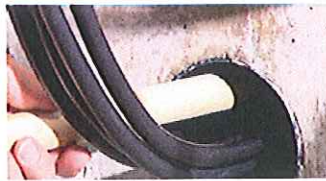
- 7** Apply till 5cm before the opening, separate the cables and press them in the compound. Fill the duct completely, also between the cables. Make sure that all air is out.



- 10** If the ball is too dry, simply add some more water. The ball should not fall apart.



- 2** It is recommended to preheat the cartridges till 30°C max. This makes the gun application easier.



- 5** Push the foamtape back by a 'stick'. Distance from the opening till the foamtape must be minimally 15cm. Make sure that the foamtape seals the ducts properly.



- 8** Before applying the mortar, make sure there is no 2100 present at that part. Good cleaning with Scotch Brite is recommended. STOPAQ[®] Mortar is flame retardant and offers a decorative finish. Only for application at basement side.



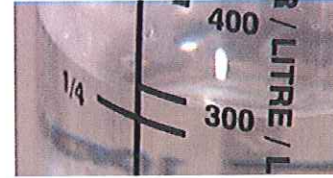
- 11** Fill the remaining 5cm with the Mortar. Press sufficiently. Again, start downwards and press the Mortar between the cables.



- 3** Clean the duct properly by a brush (art. 2125) and scotch brite. Watercleaning afterwards is optional. STOPAQ[®] adheres to wet surfaces. The adhesion can be improved if the cable and ducts are pre-applied with some 2100.



- 6** Lift the cables slightly and apply 2100 by an appropriate application gun. By using the flexible nozzle every area can be filled easily. Apply minimally 10cm 2100. Always start at the backside underneath to embed the cables. Slowly pull back the gun.



- 9** Mix the Mortar with 300 ml water until it forms a mouldable ball, fill the remaining 50mm opening.



- 12** Finish the outside of the Mortar smoothly with a scraper and a little water.

Compound suited for sealing of wall, pipe- or cable inlets and hollow spaces, against gases, moisture, standing water and running groundwater leaks.

Features

Requires minimal surface preparation
 Adheres on wet and dry surfaces
 Fast and easy to apply
 Has no pot-life, does not become hard
 Can resist up to 0,3 bar of ground water pressure
 Water - and gas impermeable
 Non Toxic - applicator- and environment friendly
 Does not age

Benefits

- The sealing remains flexible
- Does not demand special application tools
- No material waste - paste re-usable
- Immediate sealing: no curing time needed
- Provides permanent and optimal safety
- No fumes, no chemical reactions
- Adjusts to movements of pipes & cables
- Allows adding and removing of conduits at any time

FOR MORE INFO, CHECK THE PRODUCT DATA SHEET
 AT WWW.STOPAQ.COM

kiwa
 Partner for progress

NSF
 CERTIFIED TO NSF/ANSI 61

**PATENTED
 TECHNOLOGY**

DISCLAIMER: In practice, materials, substrates and specific local conditions may differ in such a way that STOPAQ B.V. cannot assume no responsibility for coverage, performance or injuries from use. Liability if any, is limited to replacement of products. Intellectual property rights must be respected. All orders and deliveries from STOPAQ B.V. are subject to our General Terms and Conditions, registered at the Chamber Of Commerce Groningen under number 02327624.